

ROTARY VANE two stage RV5

4.1 CFM



RV5

To meet demands for high throughputs with high ultimate vacuum, Edwards have developed a new concept in vacuum pumps - the world's first dual-mode vacuum pump.

This allows the user to easily configure the unit to pump very high gas loads and achieve excellent vacuum - from a single pump.

This is matched by design features such as a fully-featured Edwards motor and a fast-acting inlet valve to seal the pump for suck-back protection. Also, Edwards research into drive train and motor noise means the RV series delivers a high performance pump and broad performance envelope that's quiet and easy to maintain.

\$2,306.00

Technical data

Displacement	
50 Hz operation	5.8 m ³ h ⁻¹ / 3.4 ft ³ min ⁻¹
60 Hz operation	7.0 m ³ h ⁻¹ / 4.1 ft ³ min ⁻¹
Speed (Pneurop 6602)	
50 Hz operation	5.1 m ³ h ⁻¹ / 3 ft ³ min ⁻¹
60 Hz operation	6.2 m ³ h ⁻¹ / 3.6 ft ³ min ⁻¹
Inlet connection	NW25
Outlet connection	NW25
Maximum allowed outlet pressure	1 bar gauge / 14 psig
Maximum allowed inlet and gas ballast pressure	0.5 bar gauge / 7 psig
Maximum water vapor inlet pressure	50 mbar / 38 Torr
Maximum water vapor pumping rate	
Gas ballast low flow	60 g h ⁻¹
Gas ballast high flow	220 g h ⁻¹
Motor power	
50 Hz	250 W
60Hz	300 W
Electrical supply	
1-phase	110-120 V or 220-240 V, 50 or 60 Hz
3-phase	200-230 V or 380-460 V, 50 or 60 Hz

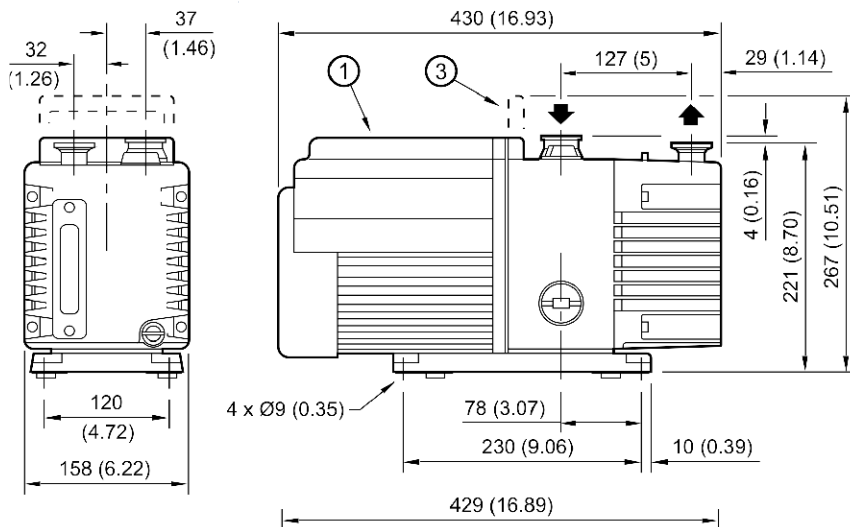


Operating temperature range	12 - 40 °C
Weight, without oil	21.6 kg / 47.3 lbs
Noise	48 dB(A) @ 50 Hz
Oil capacity	
Maximum	0.7 liter
Minimum	0.42 liter
Recommended oil (supplied)	Ultragrade 19

Ultimate vacuum (total pressure)

Gas ballast	High vacuum mode	High throughput mode
Closed	2 x 10 ⁻³ mbar / 1.5 x 10 ⁻³ Torr	3 x 10 ⁻² mbar / 2.3 x 10 ⁻² Torr
Low flow, I	3 x 10 ⁻² mbar / 2.3 x 10 ⁻² Torr	6 x 10 ⁻² mbar / 4.6 x 10 ⁻² Torr
High flow, II		1 x 10 ⁻¹ mbar / 9.1 x 10 ⁻² Torr

Dimensions

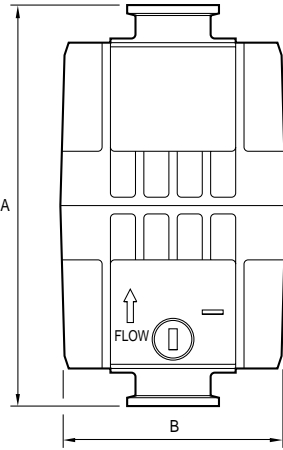


[To Our Website
idealvac.com](http://idealvac.com)

Ideal Vacuum Products, LLC
2401B Phoenix Ave. NE
Albuquerque, NM 87107
Phone: (505) 872-0037
idealvac.com or pchemlabs.com

OEM Accessories for All RV Series Pumps

Oil Mist Filters EMF



EMF Dimensions

	A	B	Inlet/outlet
EMF10	171 mm / 97 mm / 6.73 inch	3.81 inch	NW25
EMF20	191 mm / 118.4 / 7.51 inch	4.66 inch	NW25

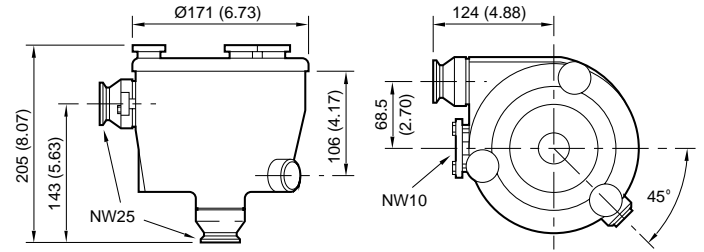
	Part No.	Price
Model EMF10 mist filter (0.500 kg) ²	A46226000	\$253.00
Model EMF20 mist filter (0.700 kg) ²	A46229000	\$303.00

² Supplied with NW25 clamp, centering ring and O-ring, NW25 to 3/4 inch BSP adaptor.

Replacement Oil Mist Filaments

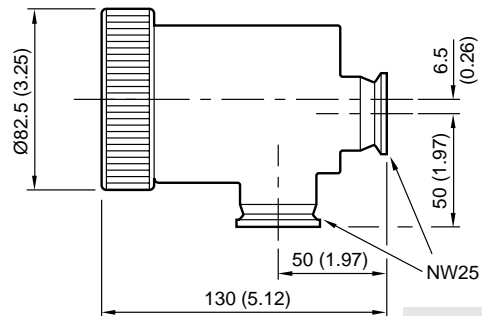
Odor element (pack of 5)		
EMF10	A22304079	\$195.00
EMF20	A22304077	\$208.00
Oil element		
EMF10	A22304198	\$108.00
EMF20	A22304199	\$130.00
Body seal		
EMF10	A27159535	\$16.19
EMF20	A27159534	\$30.70

ITF20K Inlet Dust Filter



	Part No.	Price
ITF20K inlet dust filter (3.4) kg	A44215000	\$894.00
ITF20K element and gasket kit (0.3 kg)	A44201800	\$235.00

FL20K Foreline Trap



	Part No.	Price
FL20K foreline trap (Supplied with 0.2 kg sorbent charge)	A13305000	\$393.00
Filter Media		
0.45 kg activated alumina	H02600050	\$47.59
0.2 kg activated alumina	H02600056	\$28.86

Accessories for All RV Series Pumps

KF25 Full Nipple
P/N P101234
\$39.90

KF25 Clamp
P/N P101199
\$6.65

KF25 4 Way Cross
P/N P101206
\$99.75

P/N P101878
\$165.00

P/N P102027
\$143.00

ULTRA GRADE
19 Oil

KF25 45 Degree Elbow
P/N P101214
\$47.50

KF25 Centering Ring
P/N P101243
\$5.70

KF25 Half Nipple
P/N P101218
\$14.25

Fittings for RV Pumps

RV Series Rotary Vane Pumps

Model	CFM	Price
RV3	2.7	\$2,088.00
RV5	4.1	\$2,306.00
RV8	6.9	\$2,523.00
RV12	10	\$2,904.00



KF25 Inlet Foreline Trap
P/N P101861
\$130.25



UltraGrade 19 OIL
P/N P101438 1 Liter \$13.22
P/N P101439 1 Gallon \$40.77

1" PVC Hose
P/N P101411
Per ft. \$6.00



To Our Website
idealvac.com

Ideal Vacuum Products, LLC
2401B Phoenix Ave. NE
Albuquerque, NM 87107
Phone: (505) 872-0037
idealvac.com or pchemlabs.com