

WL320A/320B

Treatment process

Ion-exchange

Purified water

Deionized water

Water quality

Type2 / A4

Space-saving water purifier ideal for washing; can be installed under a fume hood or sink, or on a table



WL320B

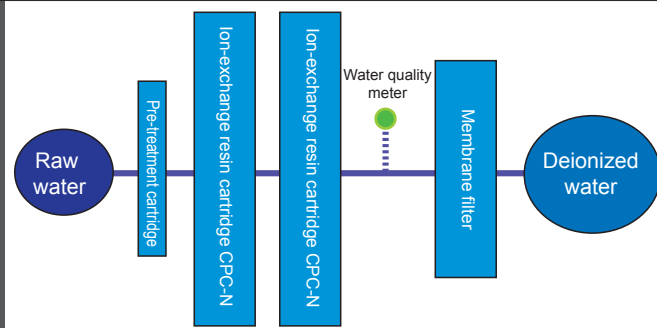
- Deionized water compliant with ASTM D1193 Type2 / JIS K 0557 A4 level, suitable for high sensitivity trace analysis
- Easy operating digital display
- Standard equipped with membrane filter at water feeding port
- Equipped with water leak detection function that stops water supply in case water leak occurs, by activating the electric leakage breaker
- Displays replacement of consumables

Specifications

Model	WL320A	WL320B
Type	Benchtop	Built-in caster
Purified water	Deionized water ASTM D 1193 Type2 / JIS K 0557 A4	
Water purifying method	Ion-exchange	
Water feeding	One touch coupler connecting resin hose	
Deionized water delivery rate	~1L/min (continuously)	
Pre-treatment cartridge	0.1µm hollow fiber + activated carbon (PWF-1)	
Ion-exchange resin cartridge	Ion-exchange cartridge (CPC-N) 3Lx2	
Leakage detection	Water leakage detector forcefully shuts off feed water solenoid valve when water leakage detected	
Ion-exchange water delivery port	Water sampling stand	
Raw water pressure range	0.5~5x100kPa (0.5~5kgf / cm ²)	
Power source	AC100~240V <0.2A	
External dimensions*	W400xD320xH600mm	
Weight	Main unit: ~30kg, water sampling stand: 5kg	
Water quality display	LED digital display (conductivity / resistivity)	
Other display	Replacement of consumables (pre-treatment cartridge, ion-exchange resin, membrane filter), alarm indication (water leakage)	
Accessories	Water supply hose, pre-treatment cartridge, ion-exchange cartridge CPC-N, membrane filter, water sampling stand, purified water sampling hose	
Legs	Rubber legs	Movable caster

* Protrusions not included

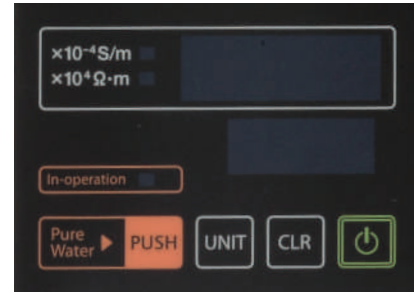
Treatment Process



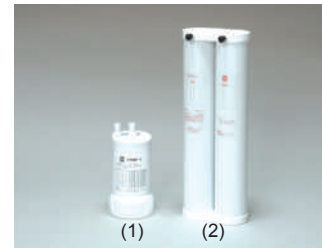
Installation Example



Control Panel



Pre-treatment Cartridge Ion-exchange Resin Cartridge



(1) Pre-treatment cartridge PWF-1
(2) Ion-exchange resin cartridge CPC-N

Water Quality Analysis

Item	ASTM D 1193 Standard Type 1	JIS K 0057 Standard A4	Measured value	ASTM D 1193 level	JIS K 0057 level
Electrical conductivity ($\mu\text{S}/\text{cm}$)	<0.056	<1	<1	Type 2	A4
Organic carbon ($\mu\text{g}/\text{l}$)	<50	<50	46	Type 1	A4
Zinc ($\mu\text{g Zn}/\text{l}$)	-	<0.1	<0.01	-	A4
Silica ($\mu\text{g SiO}_2/\text{l}$)	<3	<2.5	0.1	Type 1	A4
Chloride ion ($\mu\text{Cl}/\text{l}$)	<1	<1	<0.1	Type 1	A4
Sulfate ion ($\mu\text{g SO}_4^{2-}/\text{l}$)	-	<1	<0.1	-	A4
Total level				Type 2	A4

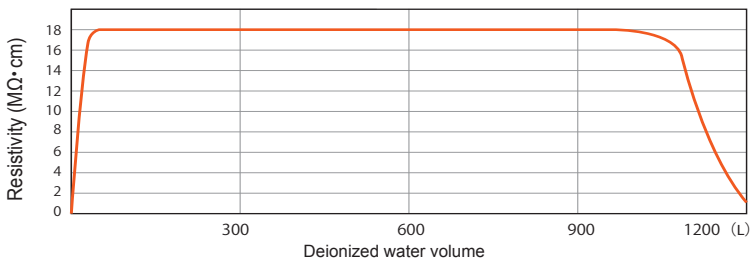
*Quality of raw water may cause different results.

*For water quality comparison JIS K 0057 ↔ ASTM D 1193 refer to page 115 of the general catalog.

Structure

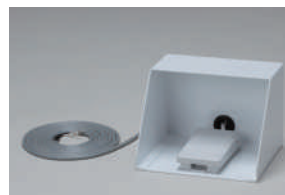


Ion-exchange Resin Life Span Test (resistivity)



Optional items / consumables

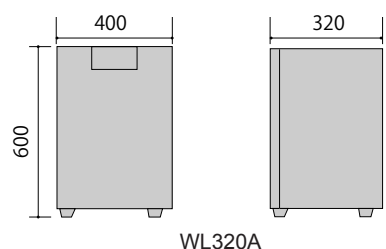
Product code	Description
253277	Fume hood / sink installation kit OWL60
253686	Water supply port unit OWH10
253099	Pre-treatment cartridge PWF-1
CPCN30010	Ion-exchange resin cartridge CPC-N
9020010004	Membrane filter (2 pcs. set) MFRL727
253276	Remote water sampling function (with foot switch) OWL58
253275	Remote water sampling function (without foot switch) OWL58



Foot switch (optional)

Note: When combined with fume hood or installed under the sink, the following are required: WL320 + 253277 + 253276 (with foot switch)

Dimensions (mm)



WL320A