

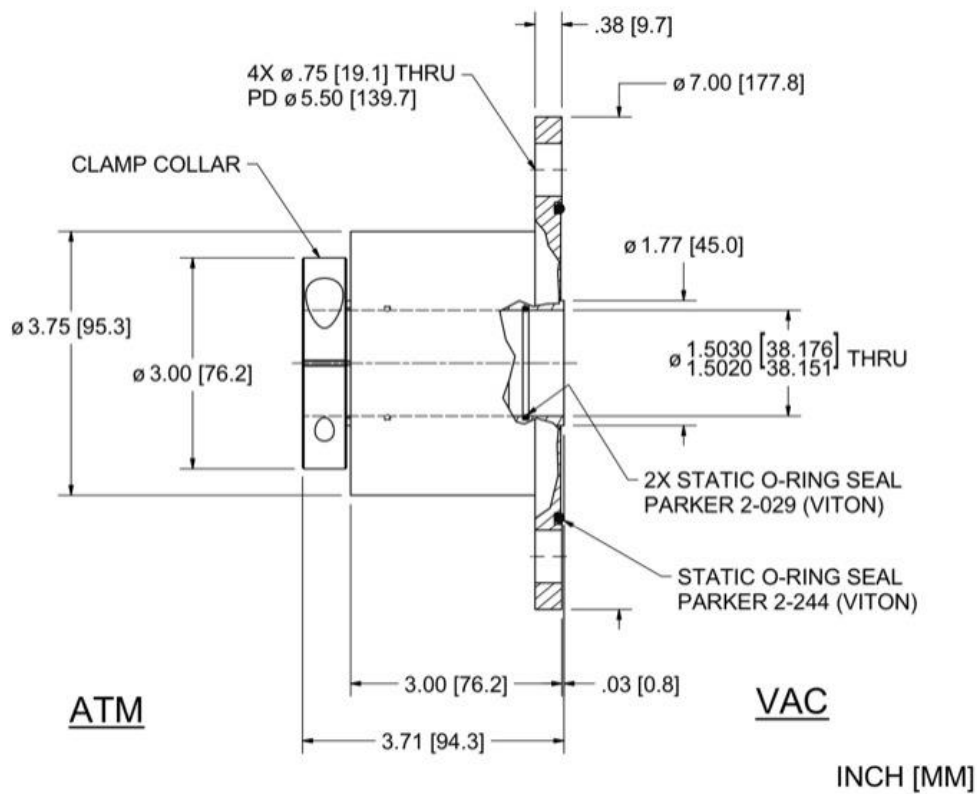
Ideal Vacuum feedthrough PN: P1013706

Model: HS-1500-SLFBC: Part Number: 103360

Ferrotec's Ferrofluidic seal Feedthrough Model HS-1500-SLFBC (part number 103360) is a member of Ferrotec's Hollow Shaft Flange Mount Feedthroughs. The HS-1500-SLFBC vacuum rotary feedthrough uses Ferrotec's standard hydrocarbon-based ferrofluid, specifically optimized for introducing rotary motion with a magnetic liquid hermetic seal in most Standard environments.

The HS-1500-SLFBC vacuum rotary feedthrough features a Hollow shaft with Ferro Flange mounting. Dimensional details are specified below. For precision measurement specifications, refer to the Spec Control Drawing.

Ferrotec Part Number 103360 Dimension Specification Drawing



Specifications for Ferrotec Part Number 103360

Shaft Hollow Shaft

Shaft Support: Simply Supported (vac+atm sides)

Ferrofluid Standard

Mounting Ferro Flange

Features: Shaft Clamp

Dimensions:

Shaft (or bore) Diameter with tolerance 1.5025 in

Shaft extension (Vac) 0.03 in

Overall length 3.714 in

Housing overall length 3 in

Housing diameter 3.75 in

Body length 2.62 in

Clamp diameter 3 in

Clamp thickness 0.625 in

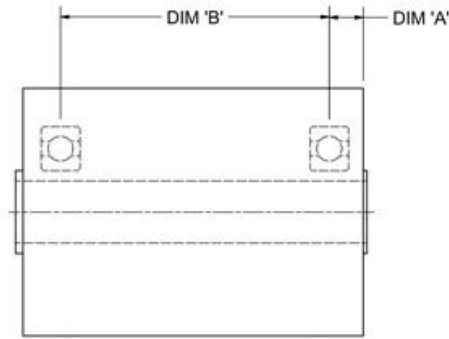
Recommended shaft diameter 1.5

Flange diameter 7 in

Flange thickness 0.38 in

Mounting holes .75, 4x on 5.50 bc in

Face seal O-ring 2-244



ATM

VAC

Bearing Specifications:

Bearing type/material 6909

Bearing Dim A 0.31 in

Bearing Dim B 2.33 in

Performance Characteristics:

Starting Torque 100rpm · 96.9 in-oz

Running Torque 100rpm · 57.2 in-oz

Starting Torque 1000rpm · 176 in-oz

Running Torque 1000rpm · 88.1 in-oz

Limiting Speed [rpm] 2320