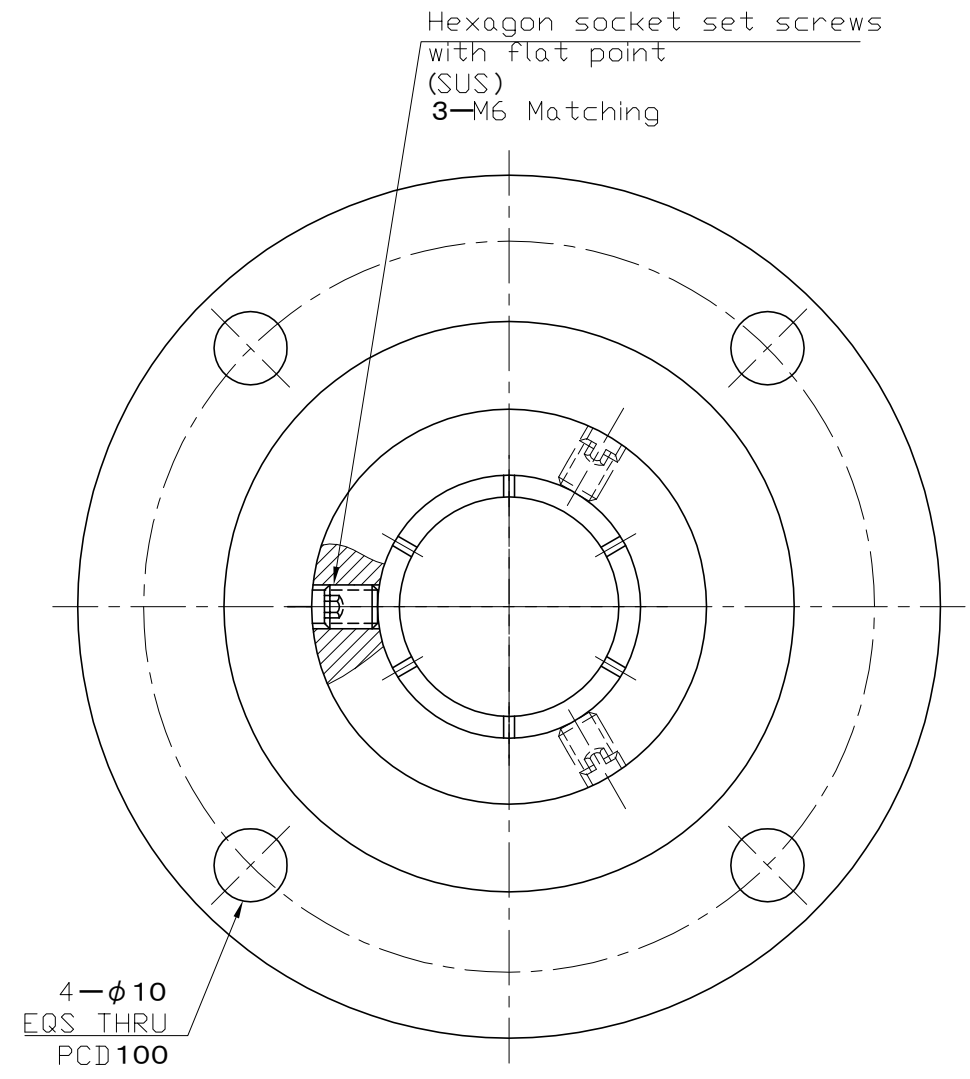
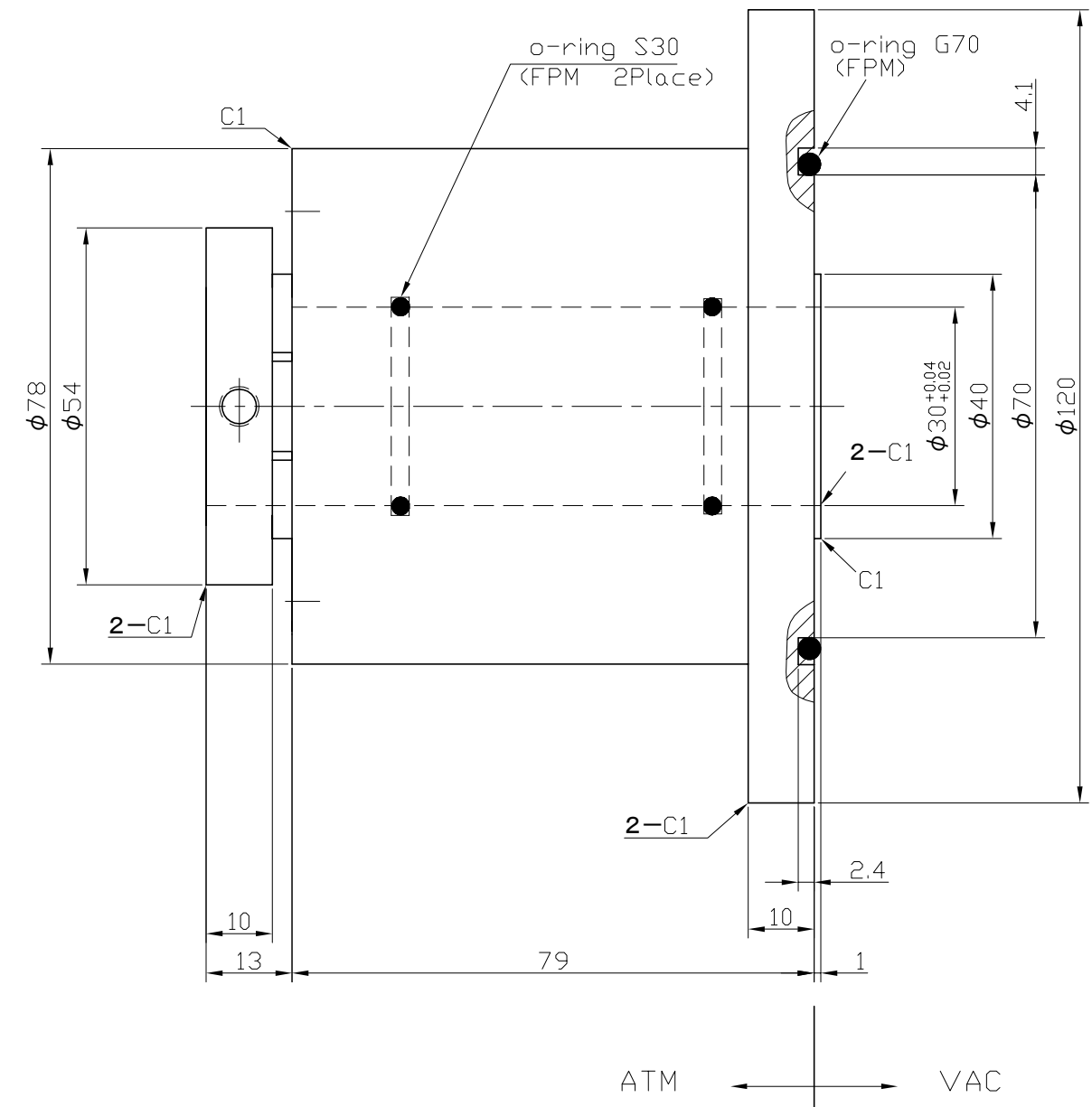




CUSTOMER MODEL:

| PARTS | COUNT |
|-----------------|-------|
| o-ring G70(FPM) | 1 |
| o-ring S30(FPM) | 2 |
| screws M6(SUS) | 3 |



Hexagon socket set screws
with flat point
(SUS)
3-M6 Matching

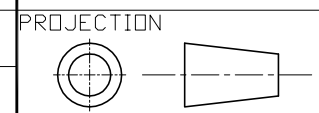
UNRELEASED
PENDING CUSTOMER APPROVAL
Approved _____ Date _____

- NOTES:
1. ROTARY SPEED: $M_{ax} 1500RPM$
 2. VAPOR PRESSURE: $10E^{-6} Pa$
 3. VACUUM LEAK CHECK TO LESS THAN $10E^{-12} Pa \cdot M^3/sec$ HELIUM
 4. TEMPERATURE: $0-100^{\circ}C$
 5. GASES SEALED: INERT GASES
 6. ROUGHNESS

- SEAL SURFACE: $\sqrt{16}$
- TOLERANCE REQUIRED: $\sqrt{16}$
- OTHER: $\sqrt{12.5}$

notes: Recommended shaft diameter $\phi 30^{+0.01}_{-0.03}$

| TOLERANCES UNLESS STATED | | | | NUB | DATE | CONTENT | NAME | PREPARED | CHECKED | DATE | MATERIAL | HOUSING | SHAFT | Model |
|--------------------------|---------|------|---------|-----|------|---------|------|----------|---------|------|----------|---------|-------|-------|
| PROCESSING | LATHE | | PRESS | | | | | | | | | | | |
| SIZE | GENERAL | HOLE | GENERAL | | | | | | | | | | | |
| <6mm | ±0.1 | | | | | | | | | | | | | |
| 6 - 30 mm | ±0.2 | | ±0.15 | | | | | | | | | | | |
| 31 - 120 mm | ±0.3 | | ±0.2 | | | | | | | | | | | |
| 121 - 315 mm | ±0.5 | | ±0.25 | | | | | | | | | | | |
| 316 - 1000 mm | ±0.8 | | ±0.4 | | | | | | | | | | | |
| 1001 - 2000 mm | ±1.2 | | ±0.6 | | | | | | | | | | | |



FEEDTHROUGH
Model
HF B030CN
P/N
SCALE 1/1
REV A