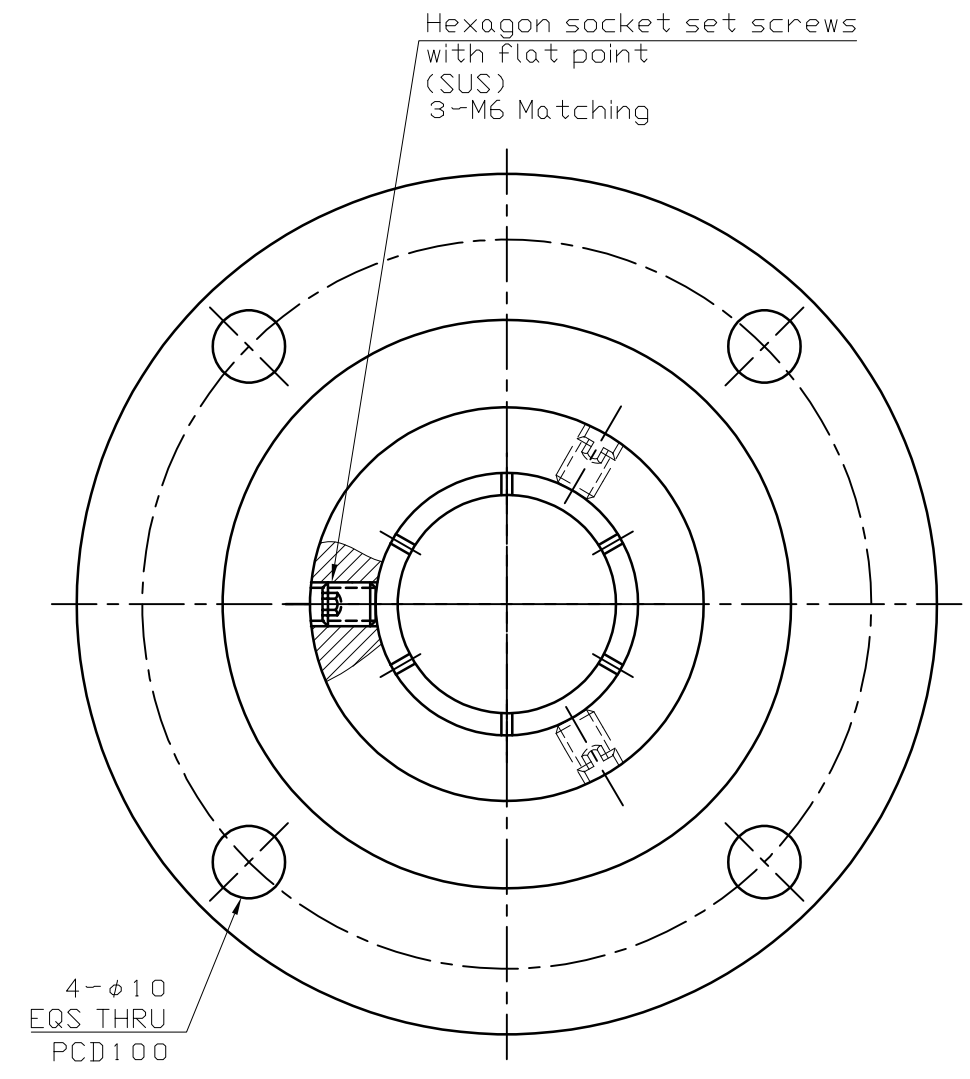
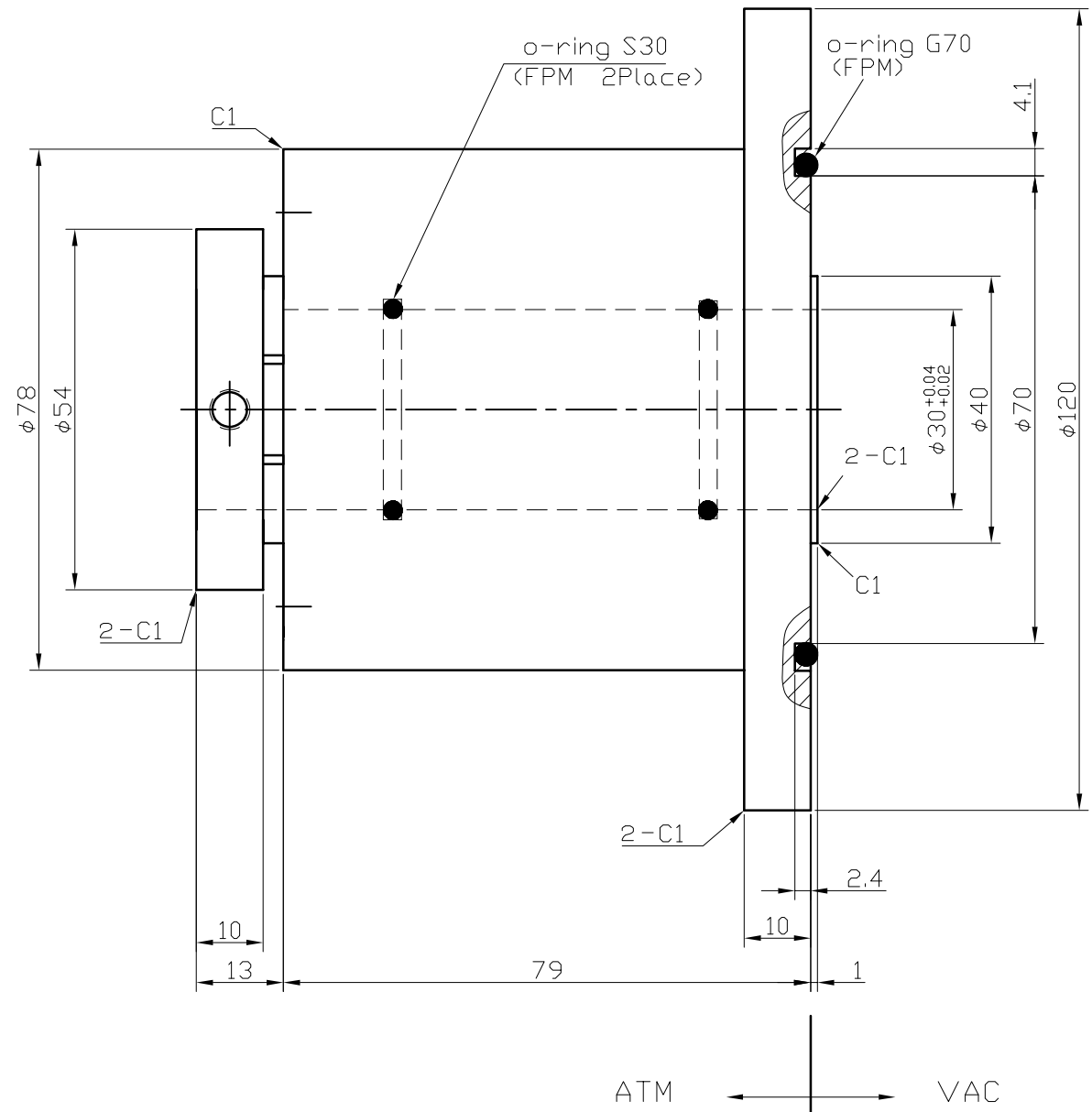




CUSTOMER MODEL:

PARTS	COUNT
o-ring G70(FPM)	1
o-ring S30(FPM)	2
screws M6(SUS)	3



UNRELEASED
 PENDING CUSTOMER APPROVAL
 Approved _____ Date _____

- NOTES:
1. ROTARY SPEED: Max 1500 RPM
 2. VAPOR PRESSURE: $10E^{-6}$ Pa
 3. VACUUM LEAK CHECK TO LESS THAN $10E^{-12}$ Pa * M³/sec HELIUM
 4. TEMPERATURE: 0-100°C
 5. GASES SEALED: INERT GASES
 6. ROUGHNESS

- SEAL SURFACE: $\sqrt{1.6}$
- TOLERANCE REQUIRED: $\sqrt{1.6}$
- OTHER: $\sqrt{1.25}$

notes: Recommended shaft diameter $\phi 30^{+0.01}_{-0.03}$

TOLERANCES UNLESS STATED			NUB	DATE	CONTENT	NAME	PREPARED	MATERIAL	Model	P/N	SCALE	REV
PROCESSING	LATHE	PRESS										
SIZE	GENERAL	HOLE	GENERAL				CHECKED	MATL HOUSING SUS304 SHAFT SUS420	HF B030CN	1/1	A	
	<6mm	±0.1	±0.15	±0.5			DATE					
6 - 30 mm	±0.2	±0.2	±0.7				2005-12-13					
31 - 120 mm	±0.3	±0.2	±1.0				ENGINEER					
121 - 315 mm	±0.5	±0.25	±1.5				DATE					
316 - 1000 mm	±0.8	±0.4	±2.0				MFC, ENG					
1001 - 2000 mm	±1.2	±0.6					DATE					

