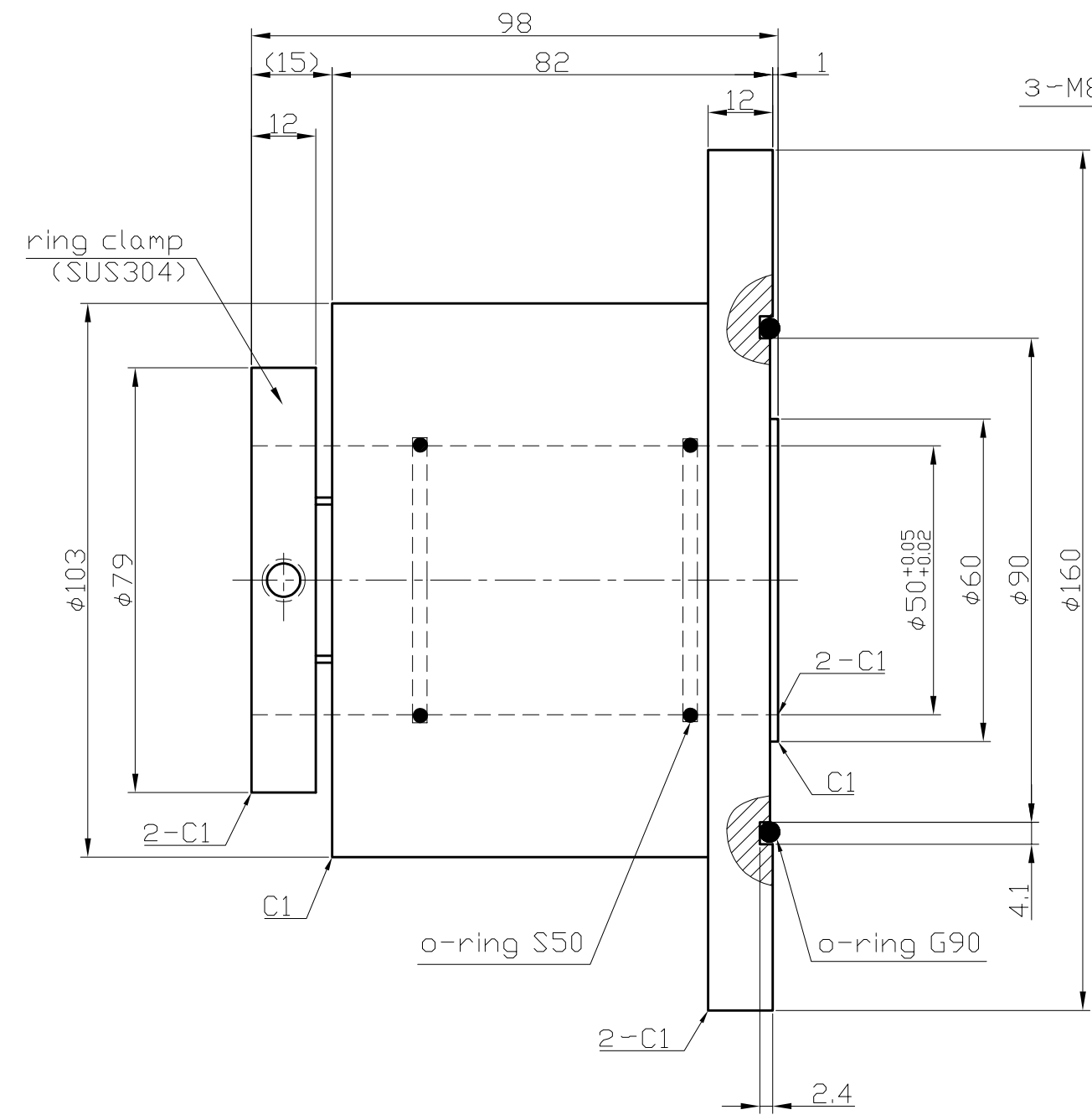


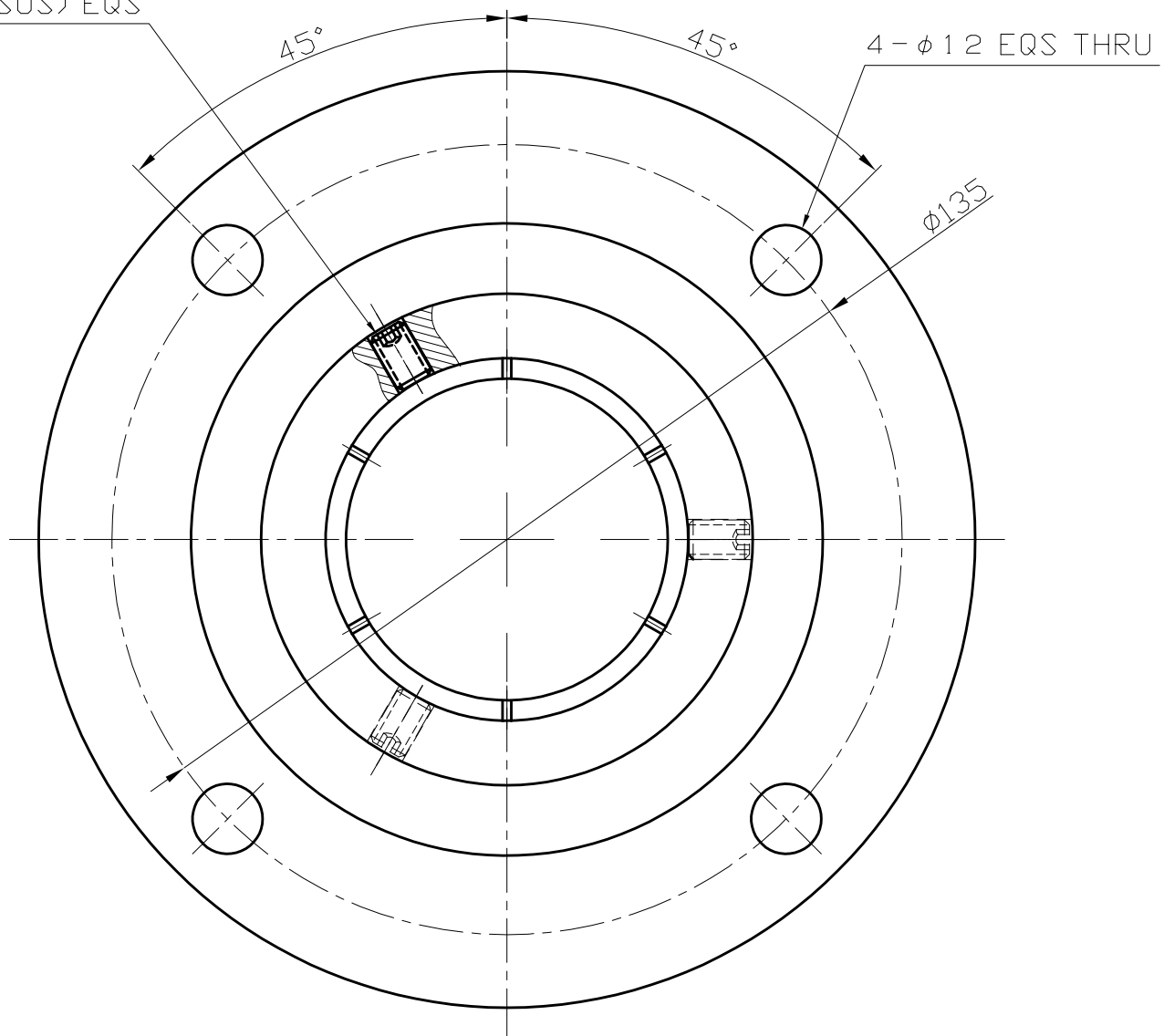


CUSTOMER MODEL:

PARTS	COUNT
o-ring G90 (FPM)	1
o-ring S50 (FPM)	2
screws M8 (SUS)	3



3-M8 (SUS) EQS



ATM ← → VAC

UNRELEASED
 PENDING CUSTOMER APPROVAL
 Approved _____ Date _____

- NOTES:
1. ROTARY SPEED: $M_{ax} 60RPM$
 2. VAPOR PRESSURE: $1 * 8E^{-6} Pa$
 3. VACUUM LEAK CHECK TO LESS THAN $2 * 10E^{-6} Pa.M^3 / sec$ HELIUM
 4. TEMPERATURE: $0-80^{\circ}C$
 5. OPERATING ENVIRONMENT: NO WATER, OIL, OR DUST
 6. GASES SEALED: INERT GASES
 7. ROUGHNESS
 - SEAL SURFACE: $\sqrt{0.4}$
 - TOLERANCE REQUIRED: $\sqrt{0.4}$
 - OTHER: $\sqrt{0.4}$

TOLERANCES UNLESS STATED				NUB	DATE	CONTENT	NAME	PREPARED
PROCESSING	LATHE		PRESS					
SIZE	GENERAL	HOLE	GENERAL					CHECKED
<6mm	± 0.1	± 0.15	± 0.5					DATE
6 - 30 mm	± 0.2							xiaolin 2003-09-12
31 - 120 mm	± 0.3	± 0.2	± 0.7					ENGINEER
121 - 315 mm	± 0.5	± 0.25	± 1.0					DATE
316 - 1000 mm	± 0.8	± 0.4	± 1.5					MFC, ENG
1001 - 2000 mm	± 1.2	± 0.6	± 2.0					DATE

MATL HOUSING SUS304	Model
SHAFT SUS420	
PROJECTION	P/N

FEEDTHROUGH	
HF B050CN	
***	SCALE
	1/1
	REV
	A

MoreTec Co., Ltd