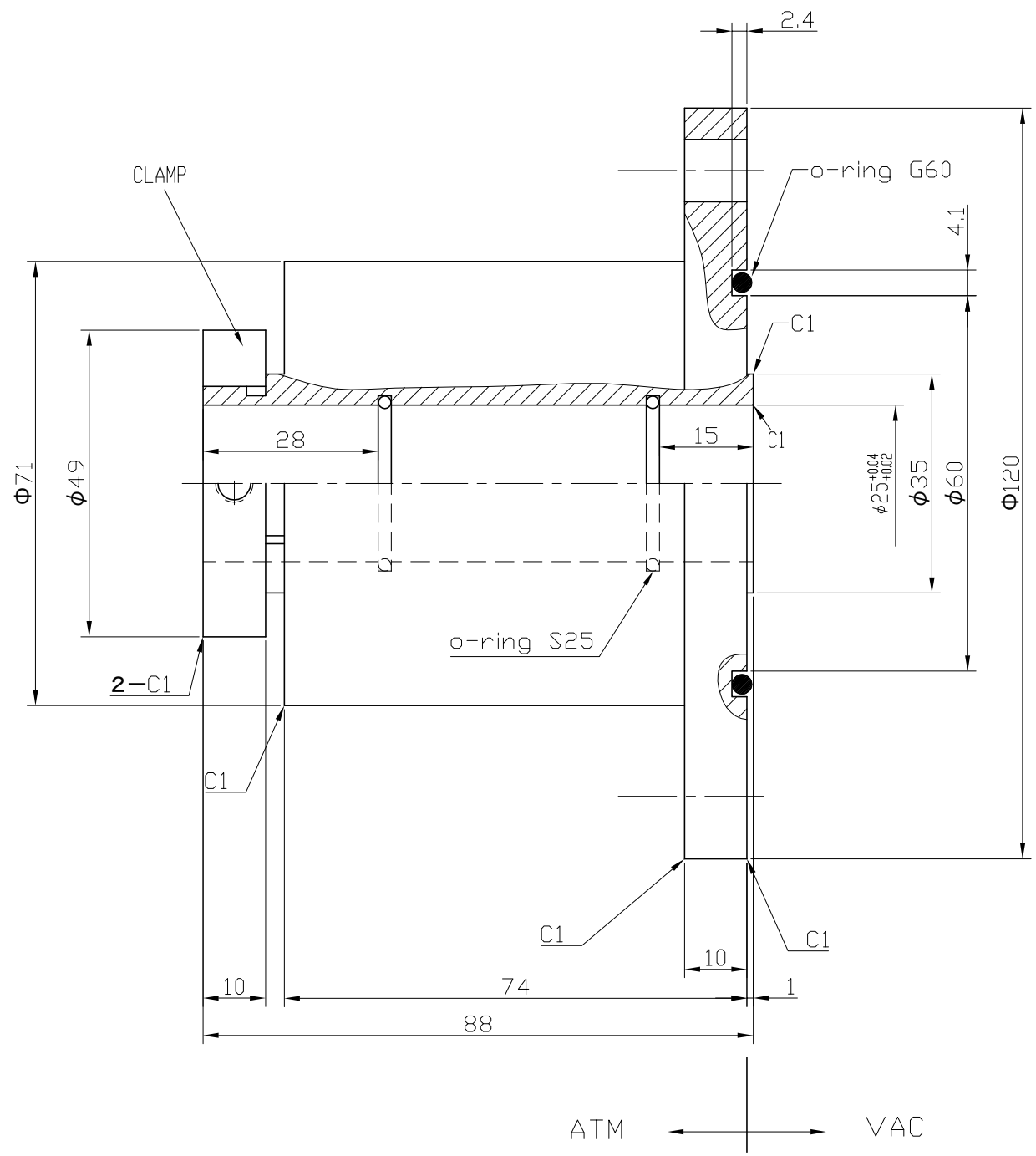
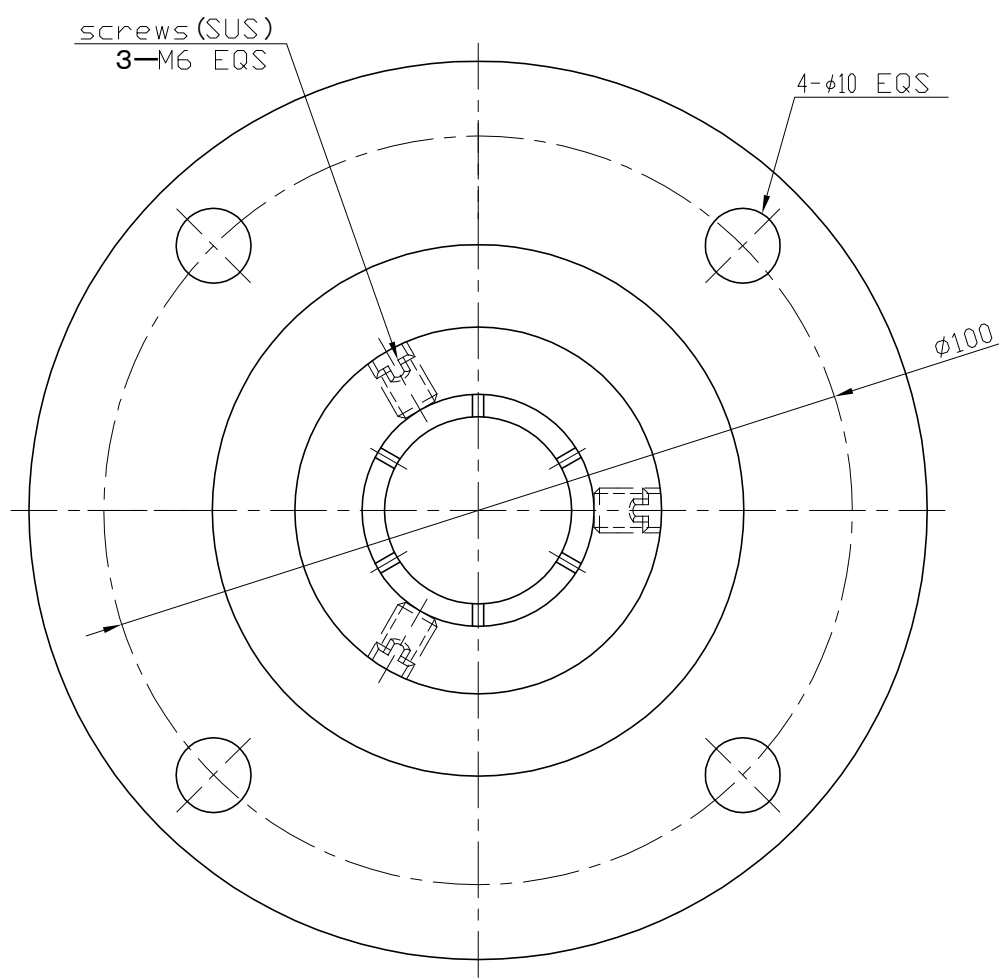




CUSTOMER MODEL:	
PARTS	COUNT
o-ring G60 (FPM)	1
screws M6 (SUS)	3



UNRELEASED
 PENDING CUSTOMER APPROVAL
 Approved _____ Date _____

1. Recommended shaft diameter $\phi 25_{-0.03}^{+0.01}$.

- NOTES:
1. ROTARY SPEED: Max 5800 RPM (Without load)
 2. VAPOR PRESSURE: 1×10^{-6} Pa (Reference)
 3. VACUUM LEAK CHECK TO LESS THAN $10E^{-12}$ Pa.M³ /sec HELIUM
 4. TEMPERATURE: 0-80°C
 5. OPERATING ENVIRONMENT: NO WATER, OIL, OR DUST
 6. GASES SEALED: INERT GASES
 7. ROUGHNESS
 - SEAL SURFACE: $\sqrt{0.4}$
 - TOLERANCE REQUIRED: $\sqrt{0.4}$
 - OTHER: $\sqrt{0.8}$

TOLERANCES UNLESS STATED			
PROCESSING SIZE	LATHE		PRESS
	GENERAL	HOLE	GENERAL
<6mm	±0.1	±0.15	±0.5
6 - 30 mm	±0.2		
31 - 120 mm	±0.3	±0.2	±0.7
121 - 315 mm	±0.5	±0.25	±1.0
316 - 1000 mm	±0.8	±0.4	±1.5
1001 - 2000 mm	±1.2	±0.6	±2.0

NUB	DATE	CONTENT	NAME	PREPARED
				WANG 2007-04-11
				CHECKED DATE
				ENGINEER DATE 2007-04-11
				MFC, ENG DATE

MATL HOUSING SUS304 SHAFT SUS420
PROJECTION

FEEDTHROUGH	
Model	
HFB025CN	
P/N	SCALE
***	1/1
	REV
	A