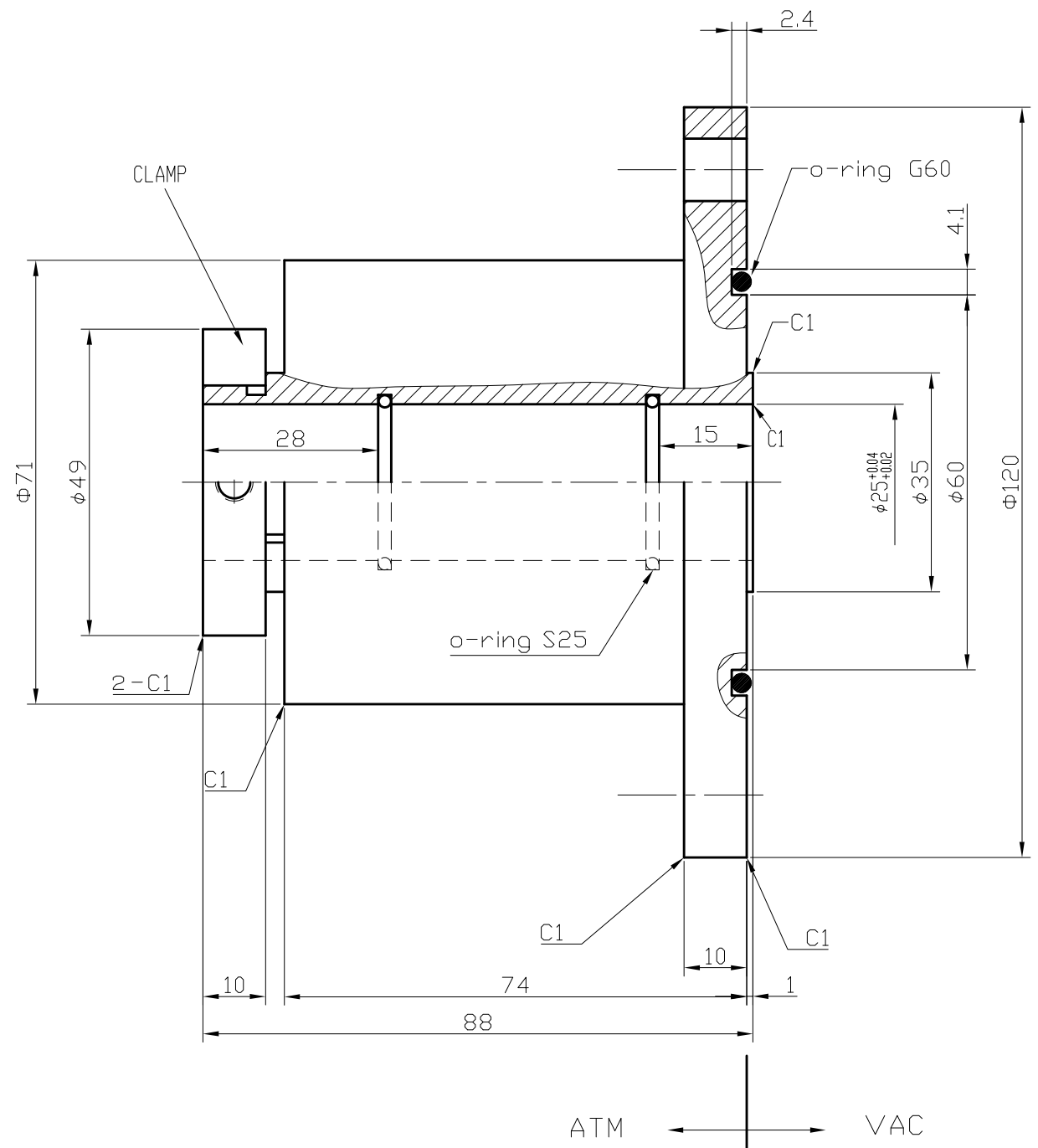
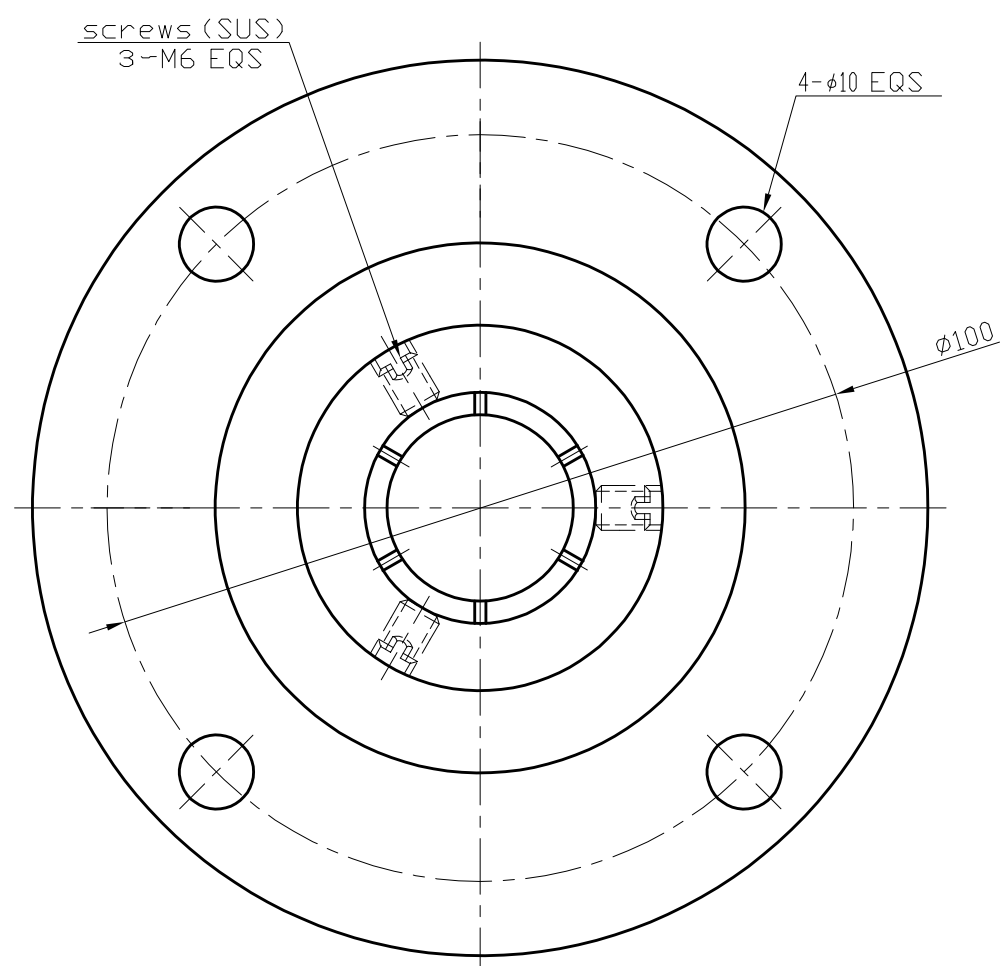




CUSTOMER MODEL:

PARTS	COUNT
o-ring G60 (FPM)	1
screws M6 (SUS)	3



UNRELEASED  
 PENDING CUSTOMER APPROVAL  
 Approved \_\_\_\_\_ Date \_\_\_\_\_

1. Recommended shaft diameter  $\phi 25^{-0.01}_{-0.03}$ .

- NOTES:
1. ROTARY SPEED: Max 5800 RPM (Without load)
  2. VAPOR PRESSURE:  $1 \times 10^{-6}$  Pa (Reference)
  3. VACUUM LEAK CHECK TO LESS THAN  $10E^{-12}$  Pa.M<sup>3</sup> /sec HELIUM
  4. TEMPERATURE: 0-80°C
  5. OPERATING ENVIRONMENT: NO WATER, OIL, OR DUST
  6. GASES SEALED: INERT GASES
  7. ROUGHNESS
    - SEAL SURFACE:  $\sqrt{0.4}$
    - TOLERANCE REQUIRED:  $\sqrt{0.4}$
    - OTHER:  $\sqrt{0.8}$

TOLERANCES UNLESS STATED				NUB	DATE	CONTENT	NAME	PREPARED	WANG 2007-04-11
PROCESSING	LATHE	PRESS							
SIZE	GENERAL	HOLE	GENERAL					CHECKED DATE	
<6mm	±0.1	±0.15	±0.5					ENGINEER DATE	GU 2007-04-11
6 - 30 mm	±0.2	±0.2	±0.7					MFC, ENG DATE	
31 - 120 mm	±0.3	±0.2	±1.0						
121 - 315 mm	±0.5	±0.25	±1.5						
316 - 1000 mm	±0.8	±0.4	±2.0						
1001 - 2000 mm	±1.2	±0.6							

MATL HOUSING SUS304 SHAFT SUS420
PROJECTION

FEEDTHROUGH	
Model	HF B025CN
P/N	***
SCALE	1/1
REV	A

MoreTec Co., Ltd